

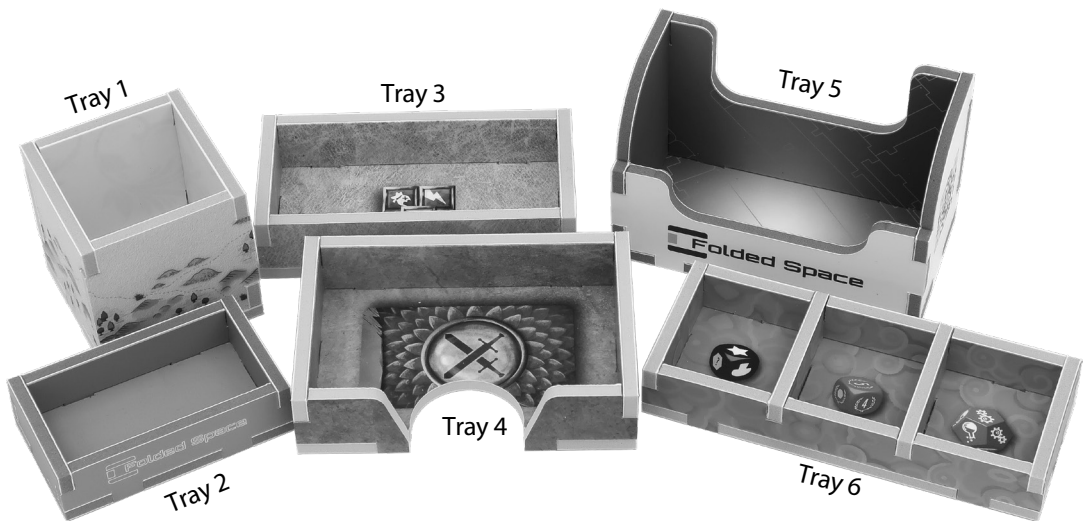
FS-SAMPLE

Folded Space Sample Product



Folded Space produces affordable, lightweight board game inserts available in **standard grey** or officially licensed **colour prints**. With over 160 products already available, the range is expanding every month.

This product FS-SAMPLE is intended to give a taste of both our grey and colour insert designs, to help publishers decide whether to add such an insert to their own games and for retailers to demonstrate our products to their customers.



FS-SAMPLE consists of six sample trays taken from various **Folded Space** insert designs:

- Tray 1 - beige tray from FS-LACRI for Lacrimosa®, produced in partnership with Devir Games™
- Tray 2 - grey tray similar to trays from our extensive standard grey Evacore range
- Tray 3 & 4 - blue trays from FS-FROST insert for Frosthaven®, produced in partnership with Cephalofair Games™
- Tray 5 - white branded tray for displaying flyers or business cards
- Tray 6 - orange tray taken FS-TAPEv2 insert for Tapestry®, produced in partnership with Stonemaier Games™

Tray Assembly

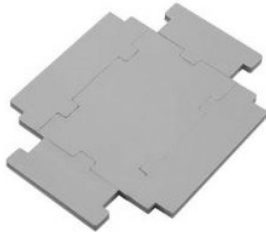
As for all Folded Space products, assembly of the trays is easy following our recommended approach:

- Dry Build the insert tray.
- Flatten the tray walls while keeping them inserted into the base.
- Apply glue in thin lines from corner tab to corner tab.
- Assemble the tray by standing the walls up and pressing the pieces together.
- Then wipe off any excess glue and leave to dry.

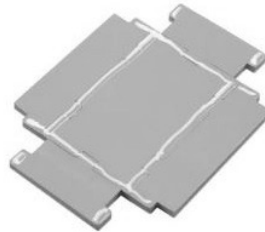
Dry Build



Flatten



Glue



Assemble



The same basic approach can be used for Tray 6, with one addition: in this case place the divider pieces at each end, and when applying the glue also apply lines for the divider pieces prior to the assemble stage.

Dry Build



Flatten



Glue



Assemble



Contact Details

Find out more at www.foldedspace.com, or get in touch directly:

- Email - store@foldedspace.com
- Facebook - Folded Space
- Instagram - @folded_space
- Twitter - @folded__space